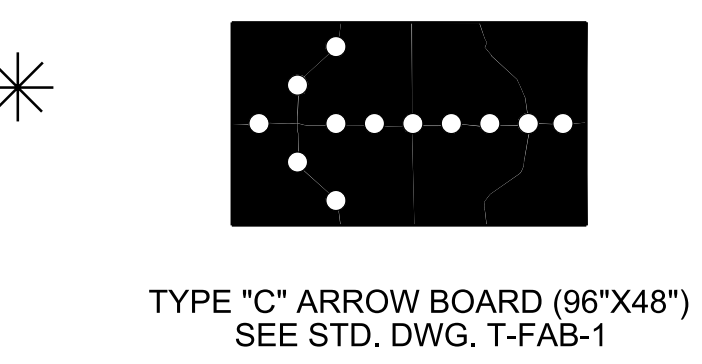
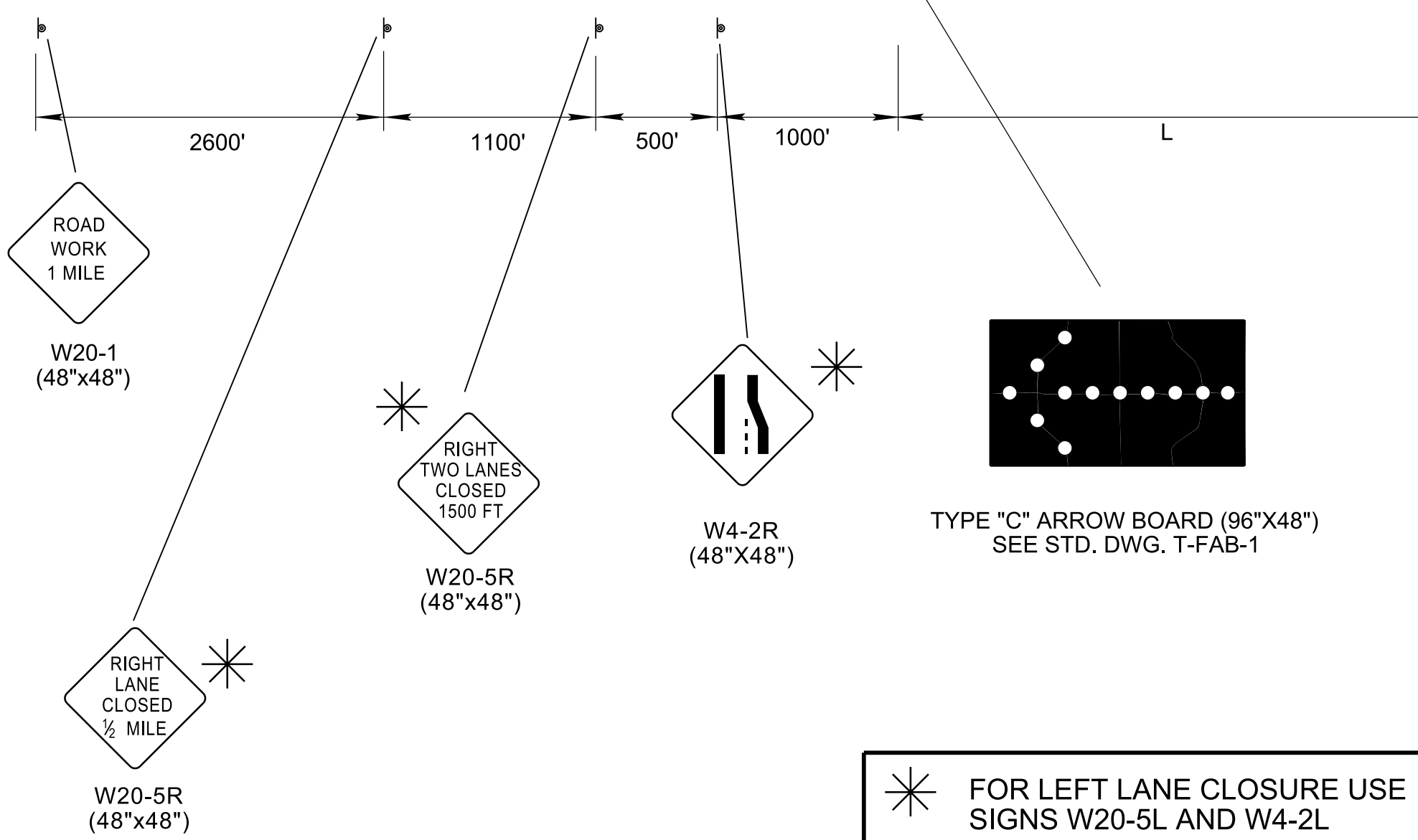
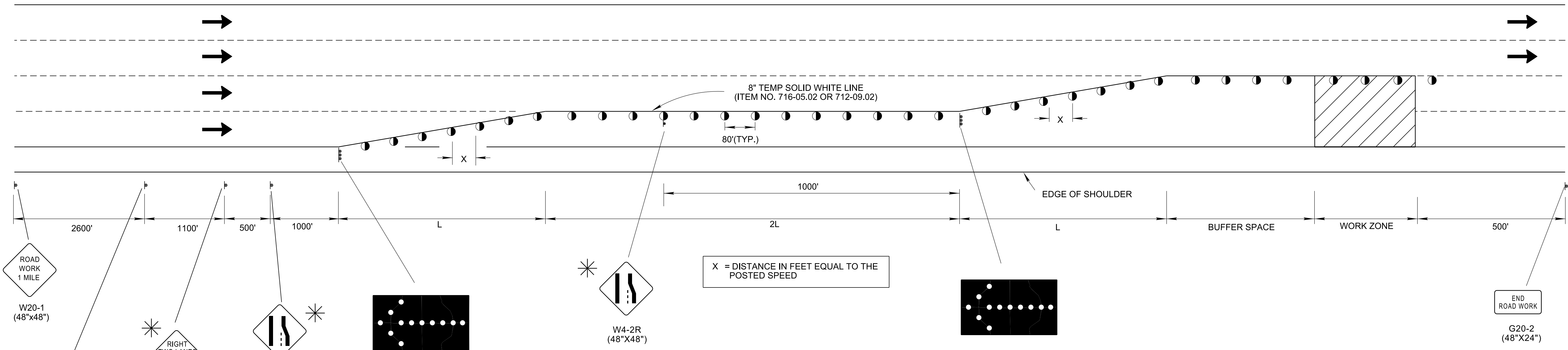
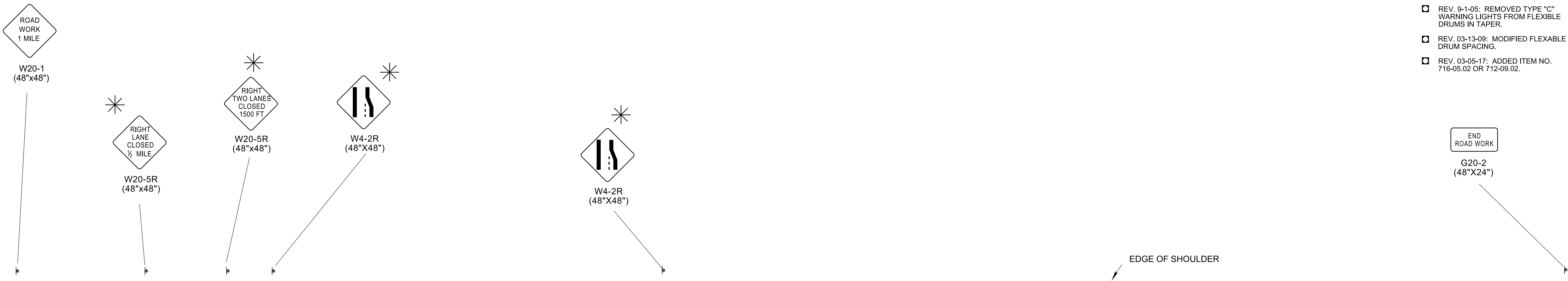


TRAFFIC CONTROL FOR TWO RIGHT OUTSIDE (OR TWO LEFT INSIDE) LANE CLOSURE ON FREEWAY OR EXPRESSWAY



FOR LEFT LANE CLOSURE USE SIGNS W20-5L AND W4-2L

COMPUTATION FOR DISTANCE L

$L = W \times S$

L = TAPER LENGTH IN FEET
W = WIDTH OF OFFSET IN FEET
S = POSTED SPEED

CHANNELIZATION DEVICE LEGEND	
	FLEXIBLE DRUMS
	SIGN SUPPORT
	DIRECTION OF TRAFFIC
	WORK SITE
	FLASHING YELLOW ARROW BOARD (SEE STD. DWG. NO. T-FAB-1, FOR DETAILS AND SPECIFICATIONS)

- GENERAL NOTES
- (A) FOR CLOSURE OF TWO LEFT LANES THE CHANNELIZING DEVICES SHALL BE SET UP SYMMETRICALLY TO THE 2 RIGHT LANES CLOSURE SET UP AND THE SIGNING SHALL REFLECT THE 2 LEFT LANES CLOSURE. THIS STANDARD APPLIES TO FREEWAYS AND EXPRESSWAYS WITH 6 OR MORE LANES.
- (B) SEE STANDARD DRAWING T-WZ-10 FOR OTHER NEEDED ADVANCE WARNING SIGNS.
- (C) SEE TABLE 6C-2 OF PART VI OF THE MANUAL ON UNIFORM TRAFFIC CONTROL DEVICES (MUTCD) FOR RECOMMENDED LENGTHS OF BUFFER SPACE WHICH ARE BASED ON STOPPING SIGHT DISTANCE AS A FUNCTION OF SPEED.

- REV. 12-18-99: MODIFIED HEADING AND ADDED BLOCKED IN NOTE FOR TWO LEFT INSIDE LANE CLOSURE.
- REV. 4-15-04: CHANGED W4-2 SIGN, CHANGED GENERAL NOTE TO COMPLY WITH 2003 MUTCD.
- REV. 9-1-05: REMOVED TYPE "C" WARNING LIGHTS FROM FLEXIBLE DRUMS IN TAPER.
- REV. 03-13-09: MODIFIED FLEXABLE DRUM SPACING.
- REV. 03-05-17: ADDED ITEM NO. 716-05.02 OR 712-09.02.

MINOR REVISION -- FHWA APPROVAL NOT REQUIRED.

STATE OF TENNESSEE
DEPARTMENT OF
TRANSPORTATION

TWO-OUTSIDE LANE
CLOSURE ON
FREEWAY
OR EXPRESSWAY

5-27-98

T-WZ-13